

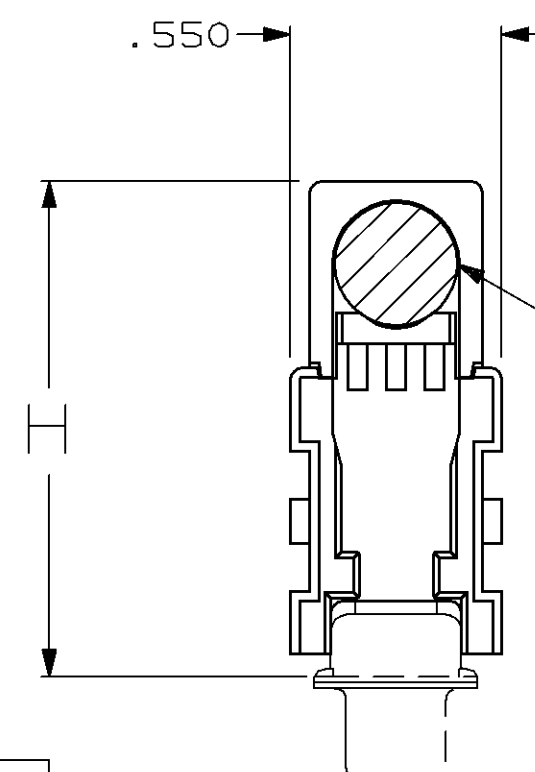
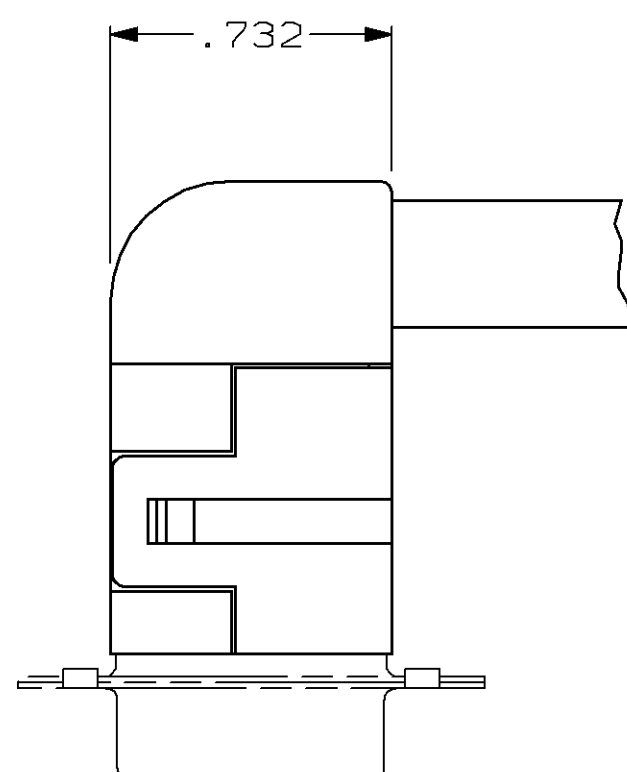
THIS DRAWING IS UNPUBLISHED. RELEASED FOR PUBLICATION ,19 .  
 © COPYRIGHT 19 BY AMP INCORPORATED. ALL INTERNATIONAL RIGHTS RESERVED.

LOC		DIST		REVISIONS			
P	F	ZONE	LTR	DESCRIPTION	DATE	APPD	
BD	48		B	REDRAWN ON CAD	5-7-90	-	
			C	OBSOLETE -2 PER EC 0020-712-95	03 FEB 96	CS	

COVER  
 (1) REQUIRED PER ASSEMBLY  
 AMP LOGO ON THIS COVER

ASSORTED CABLE SUPPORT GATE LATCHES  
 (FOR VARIETY OF CABLE SIZES)  
 SUPPLIED WITH CABLE CLAMP ASSEMBLIES.

CLAMP ACCOMODATES JACKETED CABLE  
 UP TO .330 INCH DIAMETER



	H
PLUG	1.290
RECEPTACLE	1.241

OBSOLETE	6	745550-2
	5	745550-1
	PACKAGING	PART NUMBER

- 1 ALL PARTS ARE PACKAGED UNASSEMBLED.
- 2 COVERS FIT HDE -20 TYPE CONNECTORS, BOTH PLASTIC & METAL SHELL ASSEMBLIES.
- 3 SIZE NUMBER MOLDED ON ALL PARTS.
- 4 PARTS ASSEMBLE WITHOUT HARDWARE.
- 5 KIT CONSISTS OF 1 COVER & 1 GATE LATCH ASSORTMENT.
- 6 SAME AS -1 EXCEPT, EACH PART IS INDIVIDUALLY BULK PACKED FOR MULTIPLE KIT ORDERS.

DO NOT SCALE PRINT. UNLESS SPECIFIED DIMENSIONS IN INCHES TOLERANCES ON : 2 PLC DEC ± - 3 PLC DEC ± .015 ANGLES ± -	DR 5/7/90 A. STAUB BG	AMP INCORPORATED Harrisburg, Pa. 17105	
	CHK 6-15-90 B. LENKER		
MATERIAL BLACK THERMOPLASTIC	APPD 7-9-90 J.E. WESTMAN	NAME KIT, LOW PROFILE, 90° CABLE CLAMP, SIZE 1, 9 POSITION, AMPLIMITE HDE-20	
FINISH -	APPD 7-16-90 J. ASSINI	SIZE C	FSCM NO 00779
	PRODUCT SPEC -	DRAWING NO 745550	
	APPLICATION SPEC -	SCALE 2:1	SHEET 1 OF 1
	WEIGHT -		